

# Quickpex™

Modular Pex Piping System

## Pex product catalogue

Size Range : 20, 25, 32 mm

Connections : QUICK FIT

Temperature : up to 95°C

Pressure : up to 13 bar

Material : pex

Application for  
Air, Gases, Liquids ,  
Vacuum, water



- PEX-a
- adhesive Layers
- Aluminium Layers
- Adhesive Layers
- PEX-a



## TABLE OF CONTENTS

CONTENT	PAGE
INTRODUCTION	2
TESTING	2
QUALITY	2
TECHNICAL DETAILS	3
WORKING PROCEDURE	3
PRODUCT	4-5
TOOLS & ACCESSORIES	5-6
OTHER PRODUCTS	6
WRITING PAD	7

### INTRODUCTION

For over 25 years industries have relied upon **Quickpex™** for most innovative and dependable modular piping and flow control solutions.

From inception over 25 years ago **Quickpex™** has grown to be a major international business with representation all around the world.

We are recognized as designing and building the most reliable product backed up by highly acclaimed customer service.

A genuine long term commitments to customers & partners, under pins our culture engineering excellence making **Quickpex™** a consistently dependable choice for products and service

#### TESTING PROCEDURE (ASTM F 1281-2005)

- \* The gas test pressure shall not be less than 1.2 nor more than 1.5 times the design pressure of the piping system. It shall not exceed the maximum allowable test pressure of any Non-Isolated component.
- \* The pressure in the system shall gradually increased to not more than ½ of the test pressure, the pressure shall be continuously maintained for a minimum time of 10 minutes.
- \* Than it shall be reduced to the lower of design pressure or 100psig (700kPa[Gage]) and held for such time as may be necessary to conduct examination for leakage. for leak test by soap bubble or equivalent method shall be made of all joint and connections.

#### QUALITY:

connections Quality is of paramount importance to Canares group. Our product confirmed to current Indian and Europe standards where applicable and also meet our own rigorous internal quality approvals. Canares groups operates a quality management system for the development, manufacture and supply of fittings, tube, valves and accessories which complies with the requirements of ISO 9001:2015

#### GUARANTES:

Our policy of continuously and rigorously testing **Quickpex™** fittings means we are confident they will give you year of trouble free service. To demonstrate the total confidence we have in our products and our commitment to customers service all **Quickpex™** fittings are guaranteed against manufacturing defects for 5 years when installed I accordance with our instructions on specified tube materials and application.



## PEX Tubing

**Quickpex™** Pex pipe is cross – linked, High – density polyethylene. Its available in Blue, White & yellow color for easy to identification of Air, gases, coolant and water line. **Quickpex™** pex piping can also be used in “continuously recirculating” plumbing system up to 140°F while maintaining

### TECHNICAL SPECIFICATION

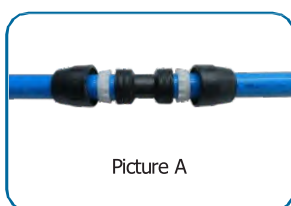
Application	Compressed air, vacuum, nitrogen, Argon (other fluids & gases please contact Us)
Pressure	Max 13 bar
Vacuum	29.32” hg
Temperature	-20° F to 140° F
Design Standard	ASTM F 1281-2005

### Materials of Construction of Pex pipe

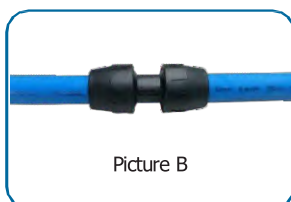
Pipe Materials	PEX
Fittings materials	Engineering Plastic
Pipe Color	Blue, other optional
Fittings color	Black

## WORKING PROCEDURE

### Simply Quick connect Concept



Picture A

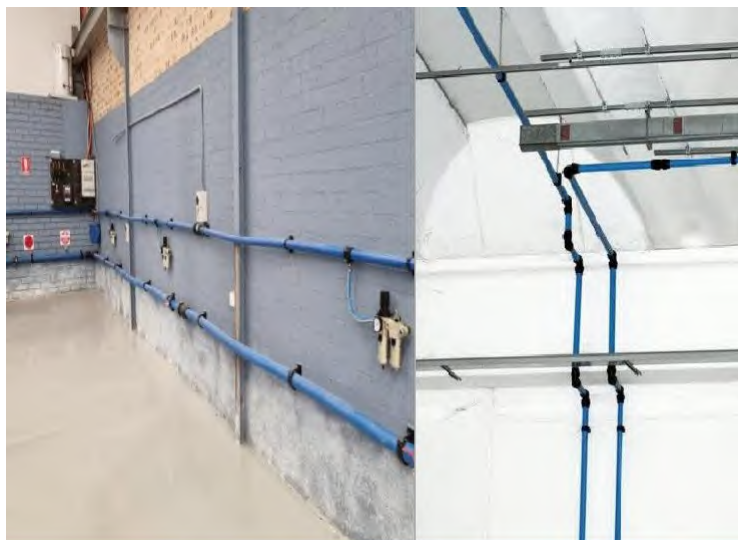


Picture B

**Quickpex™** Fittings combine the positive feature of high reliability with a simple installation technique that does not require any special tools.

The permanent pipe joint is achieved by compression i.e. tightening the nut against the tapered split rings. The profiles of the two pieces are designed to cause a progressive shrinkage of the split ring and to distribute the compression forces across the contact surface. A seal housing has been designed with a special slip-proof profile called O-Ring that come into direct with the pipe.

**Quickpex™** Fittings are made from high quality engineering plastic using advance injection moulding that makes it extremely reliable and reluctant to leakages. The The fittings are rigid and lightweight at the same time



### FEATURES & BENEFITS

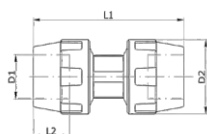
- No corrosion
- 20, 25, 32 mm dia pipe sizes
- Re-usable fittings
- Laminar Flow
- Minimum Pressure drop
- Easy to install
- Light Weight

## PEX PIPE



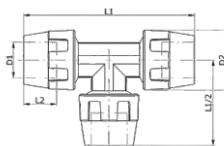
PART NO.	D1 (mm)	PN (bar)	Meter	Thickness (mm)	Weight (Kg/m)
QPB2016	20	20	1	1.25	0.199
QPB2520	25	20	1	1.50	0.299
QPB3226	32	20	1	1.60	0.412

## PIPE TO PIPE CONECTOR



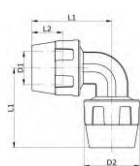
PART NO.	D1(mm)	D2(mm)	L1(mm)	L2(mm)	PN (bar)	Weight
PP152000	21	40	96	19	12	78
PP152500	26	42	96	22	12	90
PP153200	33	50	106	22	12	129

## EQUAL TEE



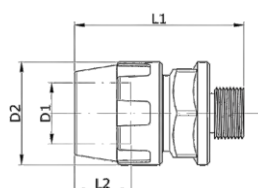
PART NO.	D1(mm)	D2(mm)	L1(mm)	L2(mm)	PN (bar)	Weight(G)
ET152000	21	40	110	19	12	125
ET152500	26	42	120	22	12	142
ET153200	33	50	130	22	12	201

## EQUAL ELBOW



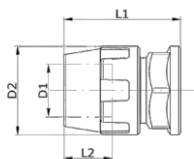
PART NO.	D1(mm)	D2(mm)	L1(mm)	L2(mm)	PN (bar)	Weight(G)
EL152000	21	40	55	19	12	84
EL152500	26	42	60	22	12	96
EL153200	33	50	65	22	12	136

## MALE CONNECTOR



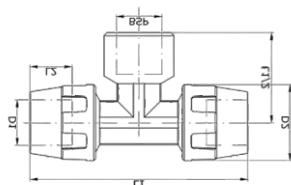
PART NO.	D1(mm)	D2(mm)	L1(mm)	L2(mm)	PN (bar)	Weight(G)
MC152005	21	40	65.5	19	12	55
MC152007	21	40	67.5	19	12	57
MC152505	26	42	69.5	22	12	69
MC152507	26	42	71.5	22	12	69
MC152510	26	42	71.5	22	12	69
MC153210	33	50	73.5	22	12	98
MC153212	33	50	74	22	12	98

### END CAP



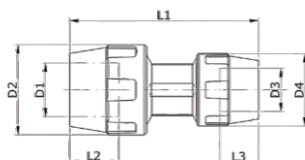
PART NO.	D1(mm)		L1(mm)	L2(mm)	PN (bar)	Weight(g)
EC152000	21	40	55.5	19	12	51
EC152500	26	42	55.5	22	12	63
EC153200	33	50	57.5	22	12	90

### FEMALE THREADED TEE



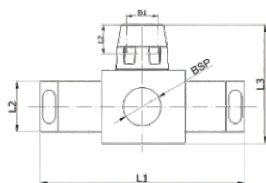
PART NO.	D1(mm)	D2(mm)	L1(mm)	L2(mm)	BSP	PN (bar)	Weight(g)
FT152005	21	40	110	19	0.5"	12	125
FT152505	26	42	120	22	0.5"	12	142
FT152507	26	42	120	22	0.7"	12	145
FT152510	26	42	120	22	1"	12	148
FT153210	33	50	130	22	1"	12	210
FT153212	33	50	130	22	1.25"	12	220

### REDUCER



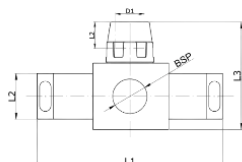
PART NO.	D1	D2	D3	D4	L1	L2	L3	Weight
RD152520	26	46	21	40	96	22	19	90
RD153220	33	50	21	40	106	22	19	129
RD153225	33	50	26	42	106	22	22	129

### SINGLE WAY WALL BRACKET



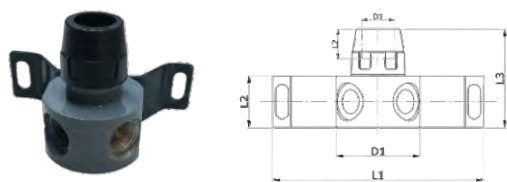
PART NO.	D1(mm)	D2(mm)	L1(mm)	L2(mm)	Weight
WB15012005	68	36	140	40	550
WB15012505	68	42	140	40	570

### SINGLE WAY WALL BRACKET WITH MINI BALL VALVE



PART NO.	D1(mm)	L1(mm)	L2(mm)	L3(mm)	Weight
WB15012005MB05	20	120	42	65	525
WB15012505MB05	25	120	42	65	550

## TWO WAY WALL BRACKET



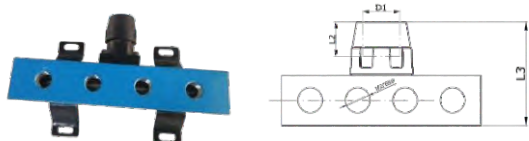
PART NO.	D1(mm)	D2(mm)	L1(mm)	L2(mm)	Weight
WB15022005	68	36	140	40	550
WB15022505	68	42	140	40	570

## TWO WAY WALL BRACKET WITH MINI BALL VALVE



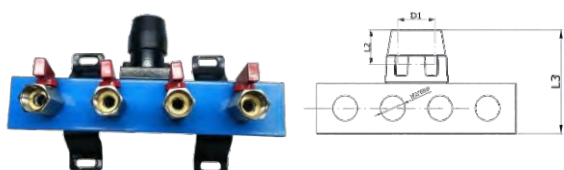
PART NO.	D1(mm)	D2(mm)	L1(mm)	L2(mm)	Weight
WB15022005MB05	68	36	140	40	550
WB15022505MB05	68	42	140	40	570

## MANIFOLD



PART NO.	OUTLET	PN	L1(mm)	L2(mm)	Weight
CAMF15200503A	3	12	260	110	3000
CAMF15200504A	4	12	260	110	3000

## MANIFOLD WITH MNI BALL VALVE



PART NO.	OUTLET	PN	L1(mm)	L2(mm)	Weight
CAMF15200503A	3	12	260	110	3300
CAMF15200504A	4	12	260	110	3400

## INLINE BALL VALVE



PART NO.	PN	D1(mm)	L1(mm)	L2(mm)	Weight
INBVMC152005	12	21	166	65	260
INBVMC152510	12	26	199	71	456
INBVMC153212	12	33	216	74	676

### TOOLS & ACCESSORIES



**'O' RING**

PART NO.	SIZE
OR112000	20
OR112500	25
OR113200	32



**CAP**

PART NO.	SIZE
CP112000	20
CP112500	25
CP113200	32



**SPLIT RING**

PART NO.	SIZE
SR112000	20
SR112500	25
SR113200	32



**PIPE CUTTER**

PART NO.	SIZE
PC2032	20 to 32



**MINI BALL VALVE**

PART NO.	SIZE
MBVMF050	1/2"



**PEX PRESS TOOL**

PART NO.	SIZE
PT2032	20 to 32



**SPANNER**

PART NO.	SIZE
CS162000	20
CS162500	25
CL163200	32



**PIPE CLIP**

PART NO.	SIZE
CL112000	20
CL112500	25
CL113200	32



**BALL VALVE**

PART NO.	SIZE
BV110500	1/2"
BV110700	3/4"
BV111000	1"
BV111200	1 1/4"



**EXTERNAL SPRING**

PARTNO.	SIZE
QPBSE20	20
QPBSE25	25
QPBSE32	32



**INTERNAL SPRING**

PARTNO.	SIZE
QPBSI20	20
QPBSI25	25
QPBSI32	32



**BENDING TOOL**

PARTNO.	SIZE
QPBT2032	20 to 32



**PLASTIC REAMER**

PARTNO.	SIZE
QPPR2032	20 to 32





**Website: [www.quickair.in](http://www.quickair.in) [www.canares.com](http://www.canares.com)**